



B96's new morning show aims to make its mark in Chicago's morning drive

Ready To Take The Chi By Storm

Darnella Dunham

DDunham@RadioandRecords.com

the opportunity to host morning drive in the nation's No. 3 market on a heritage station with a partner you respect would be a dream come true for countless personalities, including WBBM-FM (B96)/Chicago's newly appointed a.m. drive duo Jamar "J Niice" McNeil and Julian "the Night Ninja" Nieh. Individually, they've held high-profile gigs at CHR/top 40 outlets and hosted middays and nights on B96, respectively, before partnering in mornings on the CBS Radio station as "J Niice & Julian on the Radio," which debuted Jan. 5.

Now that they're together, they are embarking on the biggest adventure of their careers: starting a new morning show in the super competitive, PPM-measured Chicago market, filling the shift previously anchored by local legends Eddie & JoBo.

Co-workers at B96 since April, McNeil and Nieh first got to know each other at Clear Channel CHR/top 40 WIHT (Hot 99.5)/Washington. Nieh was hosting the night show and McNeil was a part-timer doing promotions who would occasionally help with bits and pranks on the "Julian on the Radio" show.

Nieh is full of energy on and off the air, and McNeil gravitated to him because of his personality and talent. "I generally like energetic people and I always saw his potential and had great respect for him," McNeil recalls. "I wanted to learn and it was an instant connection."

was also taking off; in July 2006, he accepted the night show position at B96. Last April they were reunited when McNeil was hired to fill middays at the station.

On New Year's Eve B96 GM Peter Bowen announced that the two personalities would pair for mornings to replace the long-running Eddie & JoBo, who departed in late November after almost 20 years on the station. "When we brought J and Julian to B96 we knew that they had the potential to work together in mornings," Bowen said in a Dec. 31 press release. "I have no doubt that their passion and enthusiasm will translate into some incredible radio."

Although both have CHR/top 40 backgrounds, they understand and appreciate the heritage and history of B96, as well as that of their morning-drive predecessors. "More so than just radio broadcasters, they're weaved into the fabric of the city," Nieh says. "They are Chicago."

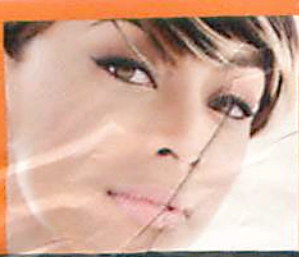
McNeil also has high praise for Eddie & JoBo. "No one will really ever truly replace them. But I think we have a chance to be something in that, because of what the city feels about the station, we can hopefully become the next them."

Likely Pairing

McNeil got his first shot at hosting a full-time shift at another Clear Channel CHR/top 40 station: WAKS (96.5 Kiss FM)/Cleveland. He then landed at WHYI (Y-100)/Miami, another co-owned pop outlet. Meanwhile, Nieh's career

Nieh





► **KERLI HILSON** SHINES WITH HER FIRST TOP 20 HIT AS A LEAD ARTIST, AS "TURNIN' ME ON," FEATURING LIL WAYNE, BOUNCES 24-20 WITH AIRPOWER STRIPES. THE SINGER/SONGWRITER OWNS A TOP 10 AS THE FEATURED ACT ON TIMBALAND'S "THE WAY I ARE," WHICH PEAKED AT NO. 4 IN 2007.

- 10.235
- 59.805
- 32.501
- 24.941
- 22.505
- 23.484
- 24.610
- 18.786
- 19.232
- 19.761
- 20.351
- 15.990
- 15.746
- 14.267
- 12.126
- 12.585
- 9.746
- 10.814
- 7.812
- 9.661
- 7.756
- 8.768
- 8.527
- 6.331
- 6.943
- 6.004
- 7.039
- 5.408
- 4.489
- 6.826
- 4.104
- 5.464
- 6.912
- 4.892
- 3.301
- 2.862
- 3.472
- 4.293
- 5.178
- 6.379

MOST ADDED

ARTIST TITLE / LABEL	NEW STATIONS
AKON FEAT. COLBY O'DONIS & KARDINAL OFFISHALL Beautiful (Konvict/Upfront/SRC/Universal Motown) KBBT, KDOB, KKFR, KPTY, KPWR, KRKA, KSEQ, KVPW, KYZZ, WAJZ, WBTT, WJJS, WJQM, WMBX, WRDW, XHTZ, XMOR	17
EMINEM FEAT. DR. DRE & 50 CENT Crack A Bottle (Shady/Aftermath/Interscope) KDGS, KDHT, KKND, KKWD, KPWR, KQKS, KJIM, KZON, WJMN, WKHT, WLLD, WPOW, WQHT, WZBZ, XMOR	15
T.I. FEAT. JUSTIN TIMBERLAKE Dead And Gone (Grand Hustle/Atlantic) KBBT, KCHZ, KKND, KPRR, KPWR, KUBE, KYVB, KZFM, WBTS, WHZT, WJJS, WLTO, WPYO, XHTO	14
BABY BASH FEAT. MARIO That's How I Go (Arista/RMG) KBBT, KDOB, KDGS, KDON, KKSS, KKWD, KPTY, KSEQ, KVPW, KYZZ, WJQM	11
SLIM THUG I Run (Koch) KBBT, KDOB, KKSS, KKWD, KPWT, KSEQ, KVEG, KVPW, KYZZ, WRDW, WXIS	11
BEYONCE Diva (Music World/Columbia) KDHT, KIKI, KPRR, KPTY, KSPM, WBTS, WHZT, WMBX, WNHT, WPOW	10
DAVID RUSH FEAT. KEVIN RUDOLF & PITBULL Shooting Star (Xquisite/Mr. 305/Universal Republic) KDOB, KDLW, KHTN, KSEQ, KUUU, KVPW, KYZZ, WJQM, XHTZ	9
FLO RIDA Right Round (Poe Boy/Atlantic) KKWD, KZFM, WBBM, WKHT, WMBX, WXIS, XHTO	7
MIKE JONES Next To You (Ice Age/Asylum) KDGS, KDHT, KKSS, KPWT, KRKA, KYLD	6
RON BROWZ Jumping (Out The Window) (Ether Boy/Universal Motown) KBBT, KDLW, KSEQ, KYZZ, WNHT, XHTZ	6

ADDED AT... WNHT
Ft. Wayne, IN
PD: Shady Spencer
Beyonce, Diva, 6
Jay Rock Feat. Lil Wayne, All My Life, 2
Ron Browz, Jumping (Out The Window), 2
Kid Cudi, Day 'N' Nite, 1

FOR REPORTING STATIONS PLAYLISTS GO TO:
www.RadioandRecords.com

NEW AND ACTIVE

ARTIST TITLE / LABEL	PLAYS /GAIN	ARTIST TITLE / LABEL	PLAYS /GAIN
BRITNEY SPEARS Circus (Jive/JLG) TOTAL STATIONS: 28	543/79	SERANI No Games (Rockstone/Phase One/Universal Republic) TOTAL STATIONS: 9	228/28
BEYONCE Diva (Music World/Columbia) TOTAL STATIONS: 42	☆ 492/282	RON BROWZ Jumping (Out The Window) (Ether Boy/Universal Motown) TOTAL STATIONS: 33	220/128
THE PUSSYCAT DOLLS I Hate This Part (Interscope) TOTAL STATIONS: 20	461/124	KEYSHIA COLE FEAT. 2PAC Playa Cardz Right (Amaru/Imani/Geffen/Interscope) TOTAL STATIONS: 29	☆ 219/56
SLIM THUG I Run (Koch) TOTAL STATIONS: 21	444/28	JASON MRAZ I'm Yours (Atlantic/RRP) TOTAL STATIONS: 13	219/0
NE-YO FEAT. JAMIE FOXX & FABOLOUS She Got Her Own (Def Jam/IDJMG) TOTAL STATIONS: 27	☆ 357/29	JAY-Z FEAT. SANTOGOLD Brooklyn Go Hard (Bad Boy/Atlantic) TOTAL STATIONS: 29	185/16

MOST INCREASED PLAYS

+721	☆	KANYE WEST Heartless (Roc-A-Fella/Def Jam/IDJMG) KCAQ +39, WPYO +38, KPTY +37, KKND +37, KKFR +36, KJIM +35, WLTO +34, KZON +32, KIBT +31, KCHZ +28
+653	☆	T.I. FEAT. JUSTIN TIMBERLAKE Dead And Gone (Grand Hustle/Atlantic) WRDW +45, WBTS +41, KUBE +41, KWIN +34, KCAQ +34, WNVZ +31, WRCL +30, WPYO +30, KCHZ +24, KKFR +23
+603		EMINEM FEAT. DR. DRE & 50 CENT Crack A Bottle (Shady/Aftermath/Interscope) KJIM +74, KDGS +44, KQKS +44, KPWR +43, XHTZ +40, KVPW +35, KKFR +30, WQHT +30, KBMB +23, KDOB +22
+566		AKON FEAT. COLBY O'DONIS & KARDINAL OFFISHALL Beautiful (Konvict/Upfront/SRC/Universal Motown) WRDW +48, KQKS +40, WBTT +32, KHTN +26, WZBZ +26, KYZZ +25, XHTZ +25, KISV +24, WKHT +24, KKWD +23
+473	☆	NE-YO Mad (Def Jam/IDJMG) WRCL +46, KUBE +34, WQHT +26, KYLD +25, KPWT +22, KKFR +20, WWIX +18, KSPM +17, KDON +17, WRVZ +17

FOR WEEK ENDING JANUARY 11, 2009
LEGEND: See legend to charts in charts section for rules and symbol explanations.
75 rhythmic stations are electronically monitored by Nielsen Broadcast Data Systems 24 hours a day, 7 days a week. © 2009 Nielsen Business Media, Inc. All rights reserved.

Col·or

perception (decal) that enables one to differentiate competing radio stations.
Communication Graphics. Call today and brighten your world.

Decals • Labels • Magnets • Signs
(800) 331-4438 www.cgilink.com
www.mostexcellentedecals.com

© 2009 Communication Graphics